

# Instructions for Re-Sharpener the MONTEC™ Broadhead.

Montec broadheads will dull with use. To reduce the need to re-sharpen, use the Montec Pre-Season for practice. To avoid extensive re-sharpening, don't let your Montec get too dull. To bring the Montec back to razor edge status follow the steps below. If you have problems achieving your desired level of sharpness, view our website videos/instructions at [www.g5outdoors.com](http://www.g5outdoors.com) or call toll free (866) 456-8836 for more in-depth instructions.

**Note:** Place the carrying case, a towel, or newspaper between the diamond stone and the surface, i.e. table or counter top, to protect from scratching.)

- Step 1** With a broad felt tip marking pen (e.g. Magic Marker,) cover all six cutting surfaces to be sharpened with ink. See Fig. A.
- Step 2** With the diamond surface marked "ROUGH-600" facing up, place the Flat Diamond Stone on a flat surface (i.e. table or counter top). DO NOT PLACE SHARPENER IN HANDS, ON LAP OR ANY OTHER BODY PART.
- Step 3** "PLACE" the broadhead flat on the diamond surfaces with the nose pointing away from you. See Fig. B.
- Step 4** Keeping the two surfaces being sharpened in full contact with the diamond surface, apply MODERATE TO HEAVY downward pressure and push the broadhead from side to side across the stone as indicated by the arrows in Fig C. Continue until all traces of ink are removed from the surfaces being sharpened.
- Step 5** Rotate the broadhead 120 degrees to the next set of blade surfaces and repeat Steps 3 & 4.
- Step 6** Repeat Step 5 for the remaining set of blade surfaces.
- Step 7** As shown in Fig. C, place the first set of blade surfaces flat on the diamond surface with the nose or tip facing away from you.
- Step 8** Keeping the two surfaces in full contact with the diamond surface, apply VERY LIGHT downward pressure on the broadhead and push the broadhead across the stone from side to side as shown in Fig. D. Repeat this side to side motion 3 to 12 times.
- Step 9** Rotate the broadhead 120 degrees to the next set of blade surfaces and repeat Step 8 until edges achieve desired sharpness.
- Step 10** Repeat step 9 for the remaining set of blade surfaces.
- Step 11** OPTIONAL FOR THOSE WHO DESIRE THE ULTIMATE SHARPNESS  
Flip the stone over so that the side marked "HONE-1200" is facing up. Repeat steps 7 thru 9, until all cutting edges become razor sharp.

## HOW SHARP IS SHARP?

\*If you can slice through a stretched rubber band in one pass – very sharp and very functional.

\*If you can shave the hair on your arm – extremely sharp – be very careful.



### Notice:

\*Broadheads, before and after resharpening, are sharp and must be handled with extreme care and caution.

\*G5 Outdoors L.L.C. will not take responsibility for any injury caused by, or in association, with the Flat Diamond Stone.

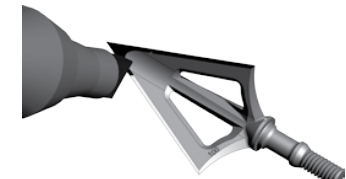


Fig. A

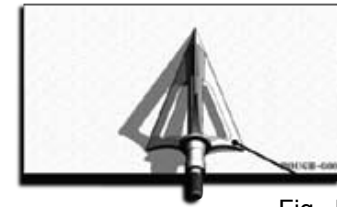


Fig. B

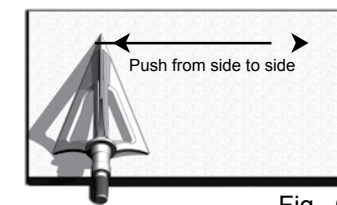


Fig. C

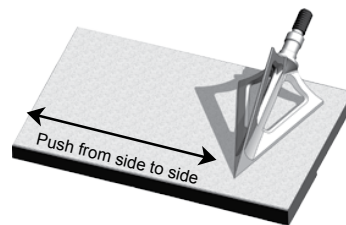


Fig. D